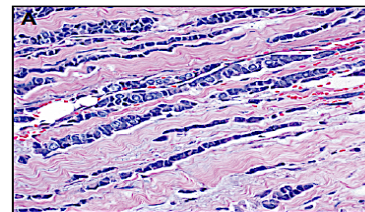


Lobular Breast Cancer Organizations and Research Funds



Lobular Breast Cancer Organizations

[Lobular Breast Cancer Alliance \(LBCA\): United States](#)

Guided by patients with invasive lobular carcinoma (ILC) and committed researchers, LBCA is focused on ILC education and raising awareness of this understudied disease and fostering patient research advocacy to promote more ILC research. LBCA funds [ILC research grants](#) for young investigators and is growing capacity to support further ILC-specific research. LBCA welcomes volunteers and monetary gifts to support its mission. *Lobularbreastcancer.org*

[Lobular Breast Cancer UK \(LBCUK\): United Kingdom](#)

Launched in 2021, this patient-driven organization, with a medical and scientific advisory board of lobular breast cancer experts, provides lobular information & knowledge development, patient advocacy & support, research & research funding. LBCUK welcomes donations, commercial partnerships and in-kind support. *Lobularbreastcancer.org.uk*

[Lobular Ireland: Ireland](#)

Lobular Ireland is a network of volunteer patient-advocates with lobular breast cancer working with breast cancer researchers and clinicians. Lobular Ireland advocates for research into ILC and raises awareness, understanding and patient education. Lobular Ireland welcomes contacts from patients, survivors and researchers. *Lobularireland.com*

[The Dynami Foundation: Plymouth Michigan, USA](#)

Dynami was launched in 2016 by a lobular patient survivor to further the research, treatment, and prevention of breast cancer. To date Dynami has raised 1.6 million dollars through an annual signature event [Uncork for a Cure](#) in Detroit, MI. Dynami's research grant program is focused on ILC, and they have funded [ILC research grants](#) at the University of Michigan Rogel Cancer Center in partnership with UPMC researchers and invited collaborators. Dynami welcomes donations, event sponsorships and volunteers. *Dynamifoundation.org*

Lobular Breast Cancer Research Funds

[UCSF Lobular Breast Cancer Research Program: University CA San Francisco, USA](#)

Principle investigator and surgeon Dr. Rita Mukhtar has dedicated her research to advance ILC research and innovate targeted treatments that improve patient lives and outcomes with a focus on ILC

diagnostics and treatment strategies. A [direct fund](#) supporting the lobular breast cancer research program ensures all contributions support this work. lobularbreastcancer.ucsf.edu

Lobular Breast Cancer Research Fund: The Cleveland Clinic, Ohio USA

The Cleveland Clinic has a dedicated fund to support lobular breast cancer research. [Donate](#) to the fund online directly. For more information or to send a check, contact the [Cleveland Clinic Philanthropy Institute](#) Attention: Chelsea Knowles P.O. Box 931517 Cleveland, OH 44193-1655 and write "Lobular Breast Cancer Research Fund" on the memo of your check. give.ccf.org/lbc

[The Sikora Lab](#): University Colorado Anschutz Medical Campus, Aurora CO USA

The Sikora Lab is led by basic and translational researcher Matt Sikora, PhD and focuses on lobular carcinoma of the breast, in particular the role of the estrogen receptor in ILC. A dedicated [lobular breast cancer research fund](#) is available for those who want to specifically support this lab's ILC research. Patients and advocates in the Denver, Front Range, or Mountain West region interested in opportunities for ILC advocacy, ILC education, or research engagement and support can [contact Dr. Sikora](#). Sikoralab.com

ILC Breast Cancer Research Fund: Pittsburgh Pennsylvania, USA

This dedicated fund supports the ongoing [lobular breast cancer research](#) being conducted in the [Lee/Oesterreich Lab](#) by Drs. Steffi Oesterreich and Adrian Lee, part of the Womens Cancer Research Center, a collaboration between UPMC Hillman Cancer Center and Magee-Womens Research Institute. For more information or to send a check contact the UPMC Hillman Cancer Center Development Office, Attn: Colleen Straub UPMC Cancer Pavilion, Suite 1B 5150 Centre Avenue Pittsburgh, PA 15232 412-623-4777 and write "ILC Breast Cancer Research Fund" on the memo. Or [donate online](#) and select "other" for donation designation and write in "ILC Breast Cancer Research Fund". Leeoesterreich.org

Research Consortia

[European Lobular Breast Cancer Consortium \(ELBCC\)](#): Europe

ELBCC launched in 2018 as a platform to bring together discovery scientists, translational researchers and clinical experts with the goal to improve the understanding, diagnosis, treatment and prognosis of those with Invasive Lobular Breast Cancer. Currently centered in Europe, it plans to expand to international collaborators. ELBCC is hosting the **2022 International [ELBCC/Lobsterpot ILC Symposium and SummerSchool](#)** in Utrecht, The Netherlands June 19-22, 2022 and welcomes corporate, philanthropic and individual event sponsorships. Patient advocates living in the EU can contact ELBCC if they are interested in [research advocacy](#). Elbcc.org

Compiled April, 2022

Is something missing or out-of-date? Contact lpateseattle@yahoo.com